

Racine Yacht Club

Andrea T. Regatta

420/Laser Sailing Instructions

Date: Friday, July 28th, 2023

Boats: Laser and 420

Schedule: 8:00 Registration/Check in and boat rigging
9:00 Competitors meeting
10:00 First warning
5 Races Max (1 race counts as a regatta)
Lunch and awards after racing

Rules: This regatta will be governed by the 2021-2024 Racing Rules of Sailing.

Notices to Competitors:

Notices to Competitors will be posted on the official regatta notice board located in the RYC hallway between the bathrooms.

Safety:

- All competitors shall wear, while on the water an approved US Coast Guard PFD that depends on 100% foam.
- Before the warning signal of the first race, boats shall check in by sailing on starboard tack past the stern of the committee boat.
- A boat retiring from the race shall report to the committee boat before leaving the course.

Class flags:

- 420 - Yellow
- laser - Red

Racing Area: Lake Michigan, north of the Harbor entrance. Race would be moved inside harbor weather dependent.

Marks: All marks will be rounded to port.

- 420/laser Pin mark is green and windward rounding marks are orange. Green pin mark will act as the Leeward mark.

Start: 420s then lasers

The Starting line will be between a staff displaying an orange flag on the Race Committee Boat and the starting mark. A gathering whistle will notify the competitors of the warning signal for a 5 minute start for the 420's followed by a rolling 5 minute start for the lasers.

Finish: The finish will be the same as the start line.

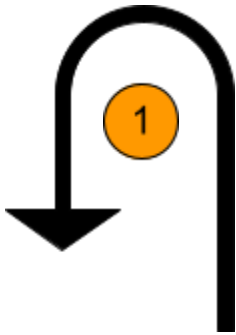
Course: Windward / leeward. Starting pin will act as the Leeward Mark *The committee boat will notify the course letter for course.

Support Teams:

- Team leaders, coaches and other support persons shall stay outside areas where boats are racing from the time of the preparatory signal for the first start until all boats have finished or retired or the race committee signals a postponement, general recall or abandonment.
- All support boats must have and operate a working VHF radio on channel 69.
- Coaching shall be allowed only outside the course area beyond the start and finish lines and the lay lines on either side. The start and finish line areas extend beyond the line for a distance equal to the length of the line.

A Course (2 legs)

Start-1-2-Finish



B Course (4 legs)

Start-1-2-1-2-Finish

